

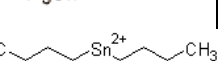
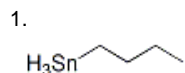
# Organiska tennföreningar i Mölnålsån

Fredrik Gunnarsson, Länsstyrelsen Västra Götaland

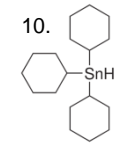
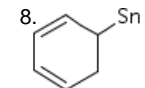
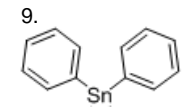
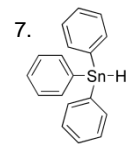
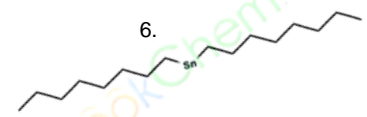
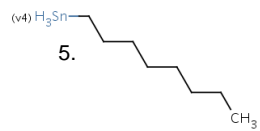
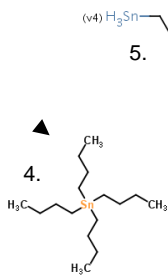
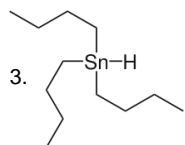


# Organiska tennföreningar i Mölndalsån

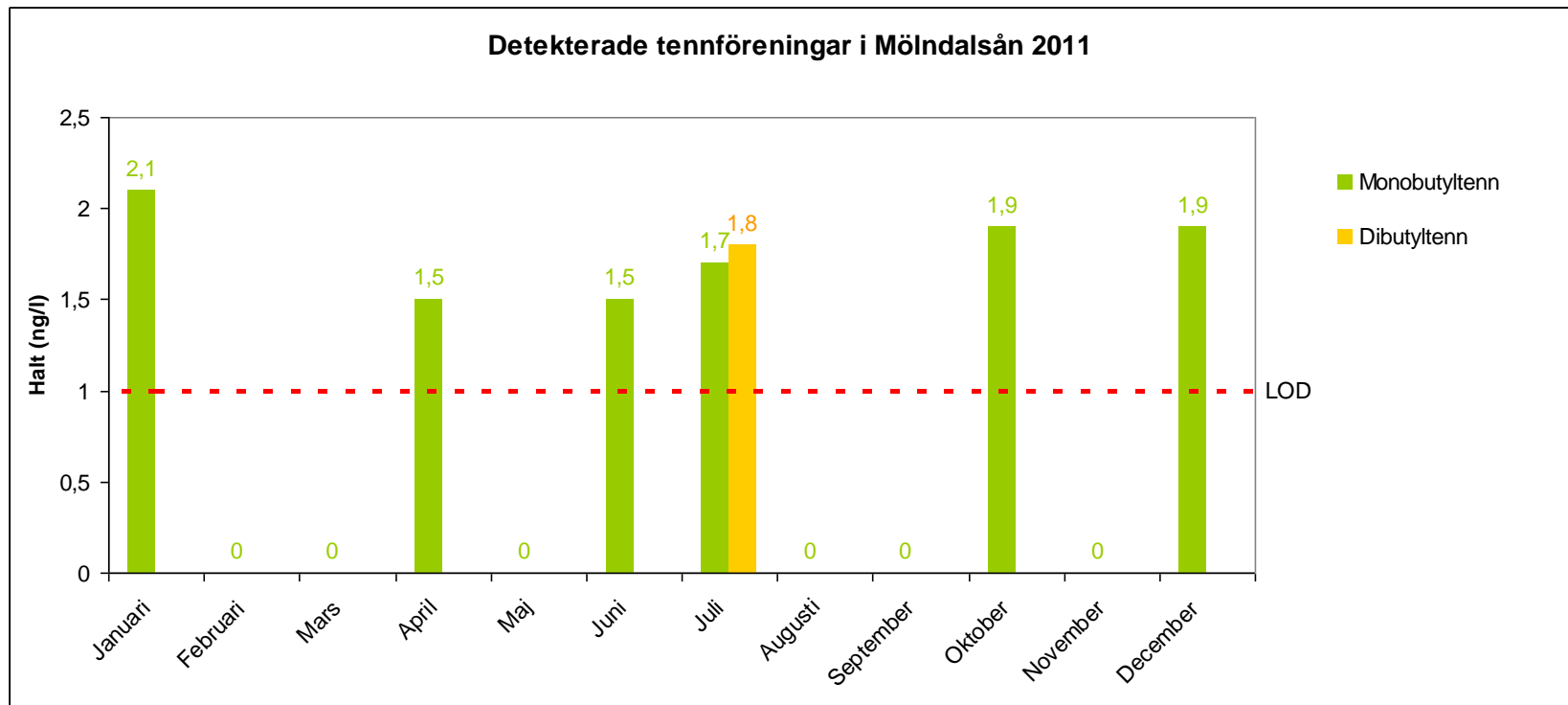
Detektionsgräns: 1,0 ng/l och 1,5 ng/l.



År 2011 Enhet: ng/l	Jan	Februari	Mars	April	Maj	Juni	Juli	Augusti	September	Oktober	November	December
1. Monobutyltenn	2,1	<1,0	<1,0	1,5	<1,5	1,5	1,7	<1,0	<1,0	1,9	<1,0	1,9
2. Dibutyltenn	<1,0	<1,0	<1,0	<1,0	<1,0	<1,0	1,8	<1,0	<1,0	<1,0	<1,0	<1,0
3. Tributyltenn	<1,0	<1,0	<1,0	<1,0	<1,0	<1,0	<1,0	<1,0	<1,0	<1,0	<1,0	<1,0
4. Tetrabutyltenn	<1,0	<1,0	<1,0	<1,0	<1,0	<1,0	<1,0	<1,0	<1,0	<1,0	<1,0	<1,0
5. Monooktyltenn	<1,0	<1,0	<1,0	<1,0	<1,0	<1,0	<1,0	<1,0	<1,0	<1,0	<1,0	<1,0
6. Dioktyltenn	<1,0	<1,0	<1,0	<1,0	<1,0	<1,0	<1,0	<1,0	<1,0	<1,0	<1,0	<1,0
7. Tricyklohexyltenn	<1,0	<1,0	<1,0	<1,0	<1,0	<1,0	<1,0	<1,0	<1,0	<1,0	<1,0	<1,0
8. Monofenyltenn	<1,0	<1,0	<1,0	<1,0	<1,0	<1,0	<1,0	<1,0	<1,0	<1,0	<1,0	<1,0
9. Difenyltenn	<1,0	<1,0	<1,0	<1,0	<1,0	<1,0	<1,0	<1,0	<1,0	<1,0	<1,0	<1,0
10. Trifenyltenn	<1,0	<1,0	<1,0	<1,0	<1,0	<1,0	<1,0	<1,0	<1,0	<1,0	<1,0	<1,0



# Organiska tennföreningar i Mölndalsån



# Organiska tennföreningar i MöIndalsån

